

# MR300

## Message Repeater

### Operating Instructions

14110 Stowe Drive, Poway, CA 92064 USA  
Phone: 1-800-848-4468 Fax: (858) 552-0172



HM ELECTRONICS, INC.

# Table of Contents

I.	PRODUCT DESCRIPTION .....	1
	A. Equipment Included .....	2
	B. Features .....	2
II.	MR300 OPERATION .....	5
	A. Recording Messages .....	5
	B. Reviewing Messages .....	6
	C. Having Messages Played Automatically .....	7
	D. Playing Messages Manually .....	8
	E. Using a Corporate Message Module (optional) .....	8

# List of Figures

Figure	Title	Page
1	MR300 Message Repeater .....	1
2	Upper portion of MR300 front panel .....	2
3	Lower portion of MR300 front panel .....	3
4	Left side of MR300 .....	4
5	Right side of MR300 .....	4
6	Corporate Message Module .....	8
7	Location for installation of Corporate Message Module in MR300 .....	9

## I. PRODUCT DESCRIPTION

The MR300 is an audio device used to record, store and play high-quality voice messages. It was designed for use with a drive-thru audio system to greet customers, give directions or promote menu items. The MR300 requires no tape, and can record and store up to five messages. Message playing can be selected manually at the keypad, or triggered automatically by any standard vehicle detector. A Corporate Message Module can be installed in the unit, with messages from corporate headquarters which will override locally recorded messages.

The MR300 has no on/off switch. When its AC adapter is plugged into an electrical outlet, the POWER light should be lit, indicating the unit is on.

These instructions will tell you how to record messages and operate the MR300.

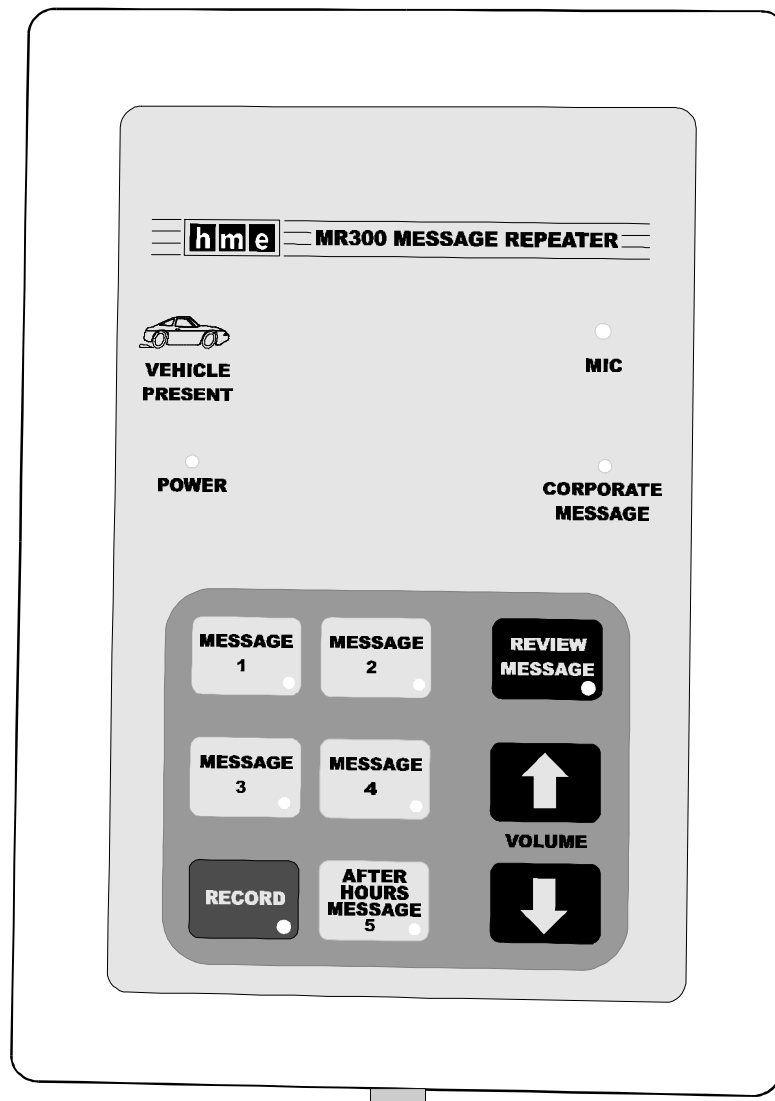


Figure 1. MR300 Message Repeater

## A. Equipment Included

- ! MR300 Message Repeater
- ! Mounting plate with hardware
- ! AC Adapter

## B. Features

### 1. Front Panel

#### Upper portion -

**VEHICLE PRESENT** indicator lights when the vehicle detector is triggered

**POWER** indicator remains lit when power is on

**CORPORATE MESSAGE** indicator lights when optional Corporate Message Module is installed

**MIC** hole is for recording messages with internal microphone

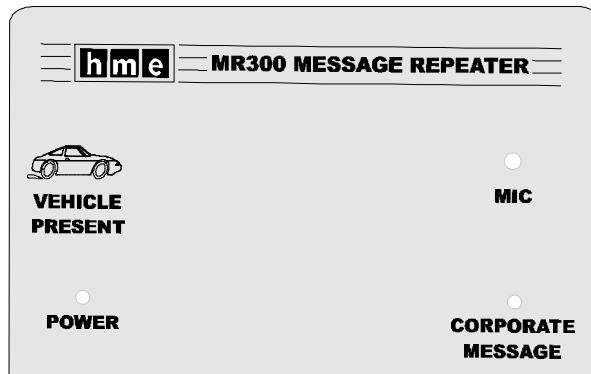


Figure 2. Upper portion of MR300 front panel

### **Lower portion -**

**MESSAGE 1** button is used to select or deselect message number one for recording, review or playback

**MESSAGE 2** button is used to select or deselect message number two for recording, review or playback

**MESSAGE 3** button is used to select or deselect message number three for recording, review or playback

**MESSAGE 4** button is used to select or deselect message number four for recording, review or playback.

**RECORD** button is used, together with one of the numbered message buttons, to record new messages.

**AFTER HOURS MESSAGE 5** button is used to select message number five or the after-hours message for recording, review or playback.

**REVIEW MESSAGE** button is used, together with one of the numbered message buttons, to review recorded messages.

**VOLUME ↑** button is used to increase volume of review message heard through internal speaker or headset earpiece.

**VOLUME ↓** button is used to decrease volume of review message heard through internal speaker or headset earpiece.

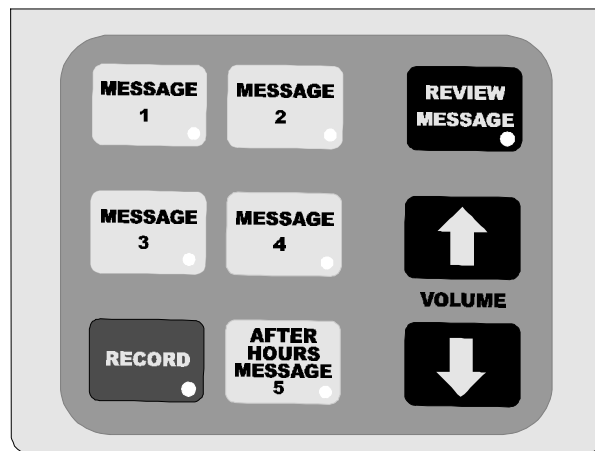


Figure 3. Lower portion of MR300 front panel

## 2. Left Side

**SPKR VOL** is a screwdriver adjustment for the outside speaker volume. A small, standard (slotted) screwdriver must be inserted in this hole and turned clockwise to increase the speaker volume or counterclockwise to decrease its volume.

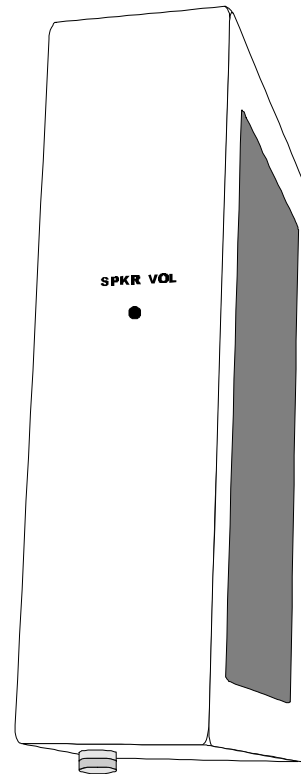


Figure 4. Left side of MR300

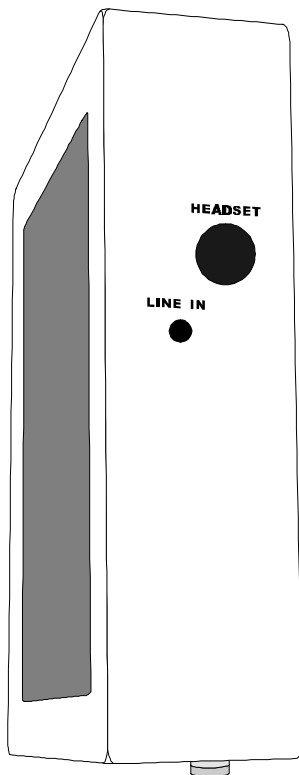


Figure 5. Right side of MR300

## 3. Right Side

**HEADSET** is a receptacle for any 5-pin HME headset cable connector.

**LINE IN** is a receptacle for a standard  $\frac{1}{8}$  inch (3.175mm) mini stereo connector for input from a cassette player, CD player or other external audio source.

## II. MR300 OPERATION

The MR300 has three operating modes; record, review and playback. Older units can record and play messages totaling 60 seconds in one of two combinations, either five 12-second (5x12) messages or two 25-second and one 10-second (2x25+10) messages. Your MR300 was set up for one of these combinations when it was installed. Newer units can record and play messages totaling 120 seconds in one of two combinations, either five 24-second (5x24) or two 50-second and one 20-second (2x50+20) messages.

### A. Recording Messages

Voice messages can be recorded using the internal microphone, or a headset microphone. Prerecorded messages or music, can be recorded from an external audio source such as a CD or tape player, through the LINE IN connection. If a headset is used, it will automatically disable the internal microphone. If an external audio source is plugged in, it will disable the internal microphone and the headset microphone.

To record a message, follow steps 1 through 4 below.

- 1 Press and hold the RECORD button.



After one second, the RECORD light will come on.

Any MESSAGE lights that were on will go off. If the RECORD button is pressed while a message is being played, the RECORD light will not come on and recording will not begin until the message has finished playing.

- 2 Press and hold the desired MESSAGE number button.  
**NOTE:** If a MESSAGE button is not pressed within 3 seconds, the RECORD light will go off and the record cycle will end.  
To begin again, return to step 1.

The MESSAGE light will come on.

Any previously recorded message will be deleted from this MESSAGE number.

If a Corporate Message Module (optional) is installed in the MR300, with a pre-recorded message for any MESSAGE number, and you press that MESSAGE number button, the light on the button will blink until you release the button, indicating no new message can be recorded on that number. When you release the button, the RECORD light will also go off and the record cycle will end. To begin again, return to step 1.

- 3 While continuing to hold the MESSAGE button, speak into the microphone.

Your message will be recorded.

**NOTE:** If your message is too long for the recording space available for this MESSAGE number, recording will stop and the RECORD and MESSAGE lights will go off. To begin again, return to step 1.

While a message is being recorded, a vehicle driving over the vehicle detector, or pressing the REVIEW button will have no effect on the message.

- 4 To stop recording, release the MESSAGE button.

Recording will stop and the RECORD and MESSAGE lights will go off.

## B. Reviewing Messages

To review a recorded message, follow steps 1 through 3 below.

- 1 Press the REVIEW button.



The REVIEW light, and the lights for all available message numbers that have recorded information on them will come on.

If the REVIEW button is pressed while a message is being played, the message will not be interrupted. When the message has finished playing, press the REVIEW button again.

- 2 Press one of the numbered MESSAGE buttons.  
**NOTE:** If a MESSAGE button is not pressed within 3 seconds, the REVIEW light will go off and the review cycle will end.  
To begin again, return to step 1.

The message will play through the internal speaker or the headset earpiece (if headset is connected). While the message is playing, the REVIEW light will remain on, and the light on the MESSAGE button you pressed will blink.

If a Corporate Message Module (optional) is installed in the MR300, with a pre-recorded message for any MESSAGE number, and you press that MESSAGE number button, the corporate message for that MESSAGE number will be played for review. The lights on the MESSAGE button and the CORPORATE MESSAGE button will blink until the message has finished playing. The lights for all other available message numbers that have recorded information on them will also remain on until the message has finished.

- 3 To increase or decrease the volume of the message being reviewed, press the VOLUME up-arrow or down-arrow button.

If the VOLUME up or down-arrow button is pushed and released within .5 seconds, the volume will increase or decrease one step, and remain at that level.

If the VOLUME up or down arrow button is pushed and held for more than .5 seconds, the volume level will increase or decrease one step every .25 second until the button is released or until maximum or minimum volume is reached.



## C. Having Messages Played Automatically

Messages set up for automatic playing are triggered by a vehicle detector when a vehicle is present in the outside speaker area. When a vehicle is present, the VEHICLE PRESENT light on the MR300 will be lit.

Depending on how your MR300 was set up by the installer, when you press MESSAGE button 1 through 4:

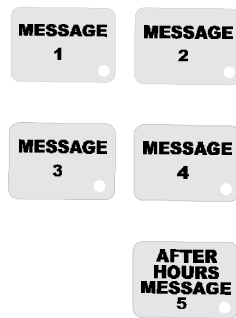


- ! a single selected message will play one time, **or**
- ! a single selected message will be repeated until the customer leaves the vehicle detection area, **or**
- ! two to four selected messages will play in ascending order, from the lowest number selected to the highest, repeating until the customer leaves the vehicle detection area.

If you would like to change the setup for automatic message playing, call the HME Customer Support Department for assistance at 1-800-848-4468.

To set up a message to play automatically, follow steps 1 through 4 below.

- 1 Press the desired MESSAGE number button(s).



The light on any MESSAGE button pressed will come on, and will remain on until it is pressed again. If no message has been recorded for a number, the MESSAGE light on that numbered button will not come on.

Whenever the vehicle detector activates a message, the light on that MESSAGE button will blink while the message is playing. If a Corporate Message Module (optional) is installed in the MR300, with a pre-recorded message for that MESSAGE number, the light on the MESSAGE button and the light on the CORPORATE MESSAGE button will blink while the message is playing. Refer to section E.

- 2 To stop message while it is playing, press that MESSAGE number button again.
- 3 To discontinue having a message played, while the message is not playing, press that MESSAGE number button again.
- 4 To select an AFTER HOURS MESSAGE, press the MESSAGE 5 button.

The MESSAGE light will go off. The message will stop playing for that time only, but will not be discontinued. It will play again next time it is triggered by the vehicle detector.

The MESSAGE light will go off. That message will not play again unless reactivated.

The MESSAGE 5 light will go on. All other MESSAGE lights will go off, and all other messages will be deactivated. Outside speaker volume will be decreased. Whenever the vehicle detector activates the after hours message, the message will repeat three times, at pre-set intervals. Pressing any MESSAGE number button after the AFTER HOURS MESSAGE has been selected will deactivate the AFTER HOURS MESSAGE. If MESSAGE 5 button is pressed, the previously selected messages will be reactivated. If MESSAGE button 1 through 4 is pressed, that message will be selected.

## D. Playing Messages Manually

The manual selection mode is used for troubleshooting only, to confirm that a message is being heard at the outside speaker. When manually selected, a message will be played only once.

To manually select messages for playing, follow steps 1 and 2 below.

- 1 Press and hold the REVIEW button for three seconds, then release it.



The REVIEW light will come on and, after three seconds, will begin to blink. MESSAGE lights will come on for all available recorded messages.

- 2 Press one of the numbered MESSAGE buttons.  
**NOTE:** If a MESSAGE button is not pressed within 3 seconds, the REVIEW light will go off, indicating an exit from the manual play mode.

The selected message will play one time at the outside speaker.  
If another message is playing at the outside speaker, it will not be interrupted. If the message playing is from a Corporate Message Module, the CORPORATE MESSAGE light will blink while the message is playing.  
After the manually selected message has finished playing, any MESSAGE lights for previously selected messages will come back on.

## E. Using a Corporate Message Module (optional)

A Corporate Message Module contains messages prerecorded at your corporate office. The messages are designated for specific MR300 MESSAGE numbers. If you are using a Corporate Message Module, its corporate messages will have priority over any messages you have recorded for the specified MESSAGE numbers. They will play instead of your messages, but will not erase your messages. Therefore, when the module is removed from the MR300, any messages you previously recorded will be reactivated.

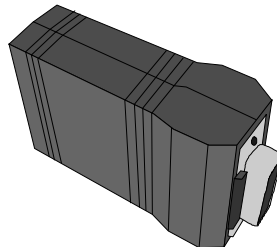
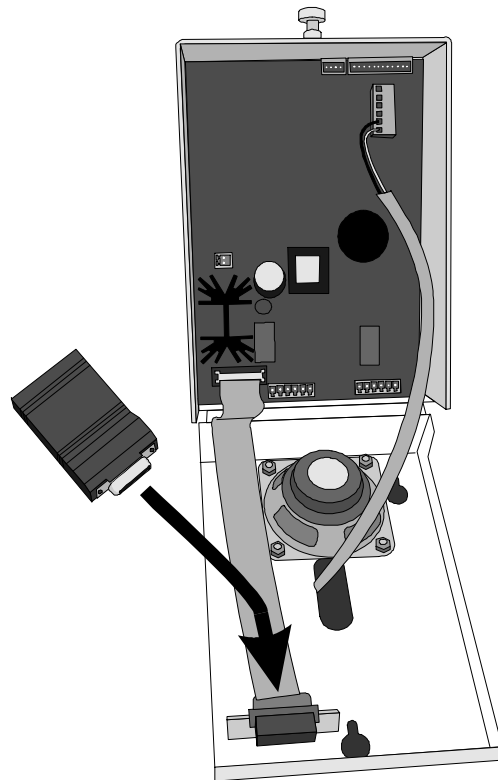


Figure 6. Corporate Message Module

To install a Corporate Message Module in your MR300, follow steps 1 through 4 below.

- 1 Unscrew the lock knob on the bottom of the unit by turning it counterclockwise.
- 2 Lift the bottom of the front panel to open the MR300. The power will go off automatically when the unit is opened.
- 3 Plug the module into the receptacle shown by the arrow in Figure 7. Be certain the module is turned in the right direction so the 25-pin plug on its end is properly positioned to insert in the receptacle inside the MR300 unit.
- 4 Close the unit and lock it by turning the lock knob clockwise.



**Figure 7. Location for installation of Corporate Message Module in MR300**